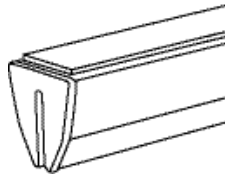


Installation Guidelines



Anti-Gravity Anchor



EasyUp Pole

Instructions for Hanging

Step 1

Hold the anchor with the magnet up and insert graphic into slot. Slide graphic back and forth slightly to make sure it is all the way in the anchor. Fig. 1

Step 2

Insert top of EasyUp pole into wide slot on the back toward the middle of the anchor. Fig. 2

Step 3

Align anchor to ceiling grid and attach. Fig. 3

Step 4

Swivel pole parallel to graphic to release pole. Fig. 4

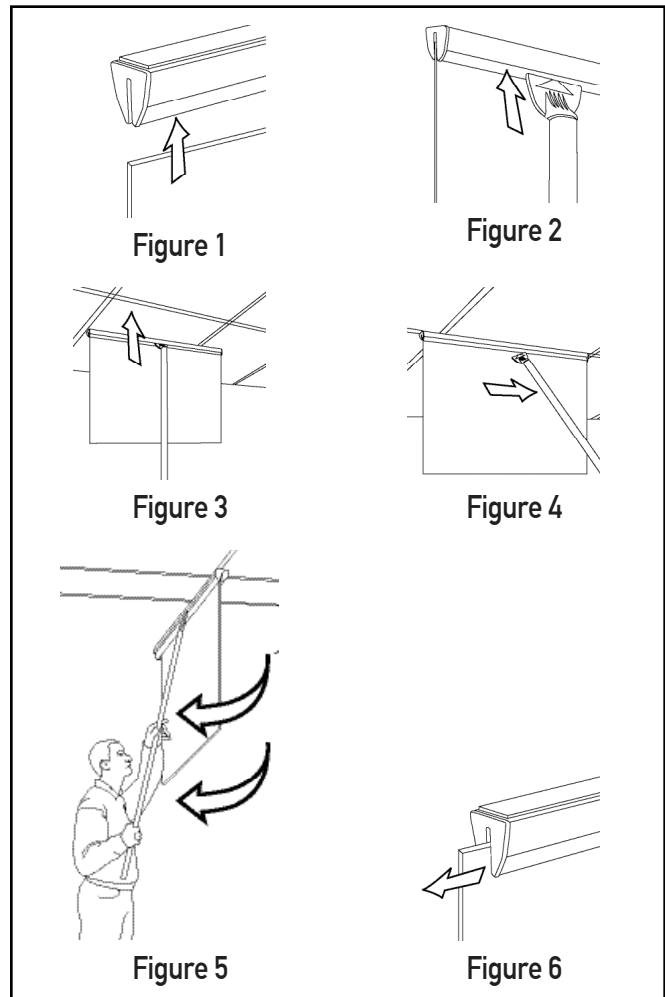
Instructions to Remove Graphic

Step 5

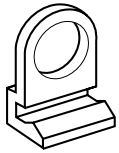
Insert end of EasyUp pole into wide slot on the back toward the middle of the anchor. Swivel pole away from graphic & towards yourself to detach from ceiling. Fig. 5

Step 6

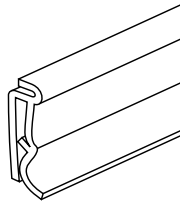
Slide graphic out side of anchor. Fig. 6
Repeat steps 1-4 to hang different graphic.



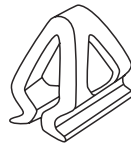
Installation Guidelines



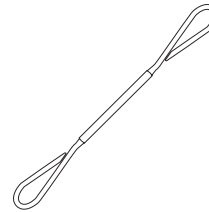
Gotcha Clip



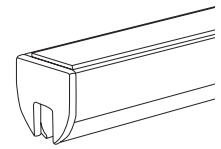
Gotcha



MultiClip



Double Unlocking
Hook



Variable Point
Anchor

Instructions for Hanging

Step 1

Insert graphic into Gotcha holder. Fig. 1

Step 2

Snap Gotcha clips into Gotcha holder. Fig. 2
For best results, place clips 1/3 of the way in from each end of the top Gotcha holder to prevent bowing.

Step 3

Squeeze sides of one MultiClip together. Align the rail of the MultiClip with the channel of the Variable Point anchor. Fig. 3

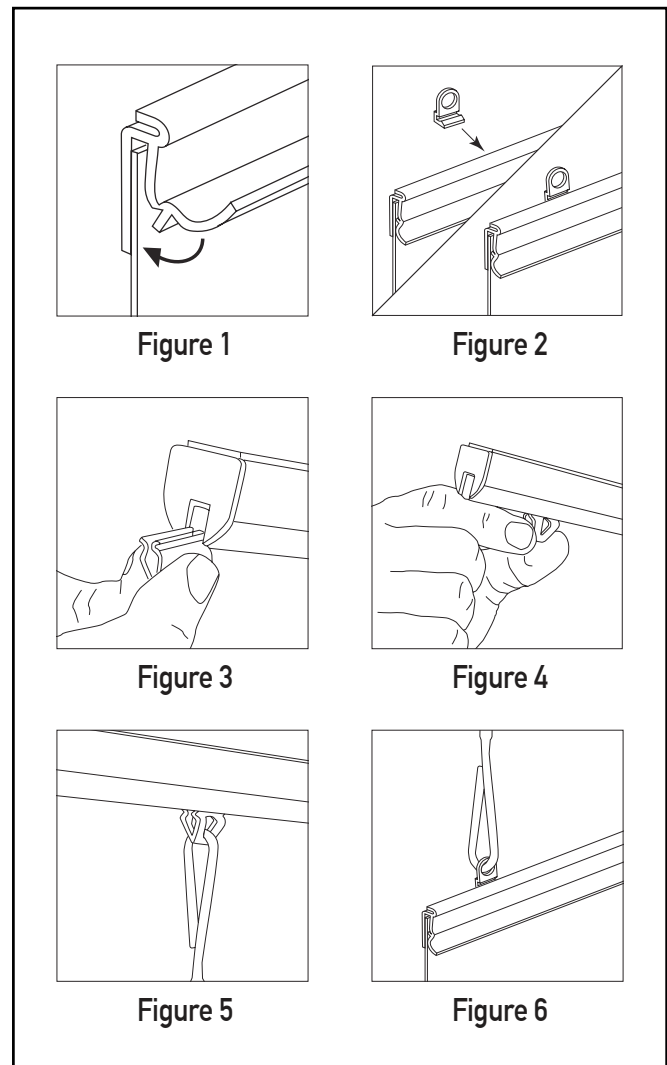
Step 4

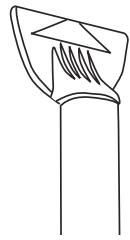
Slide MultiClip into channel of anchor. Fig. 4
For best results, place 1/3 of the way in from each end. Repeat Steps 3 and 4 for second MultiClip.

Step 5

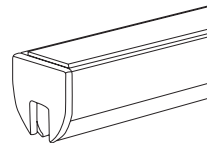
Insert one end of one hook through each MultiClip. Fig. 5
Insert opposite end of each hook through corresponding Gotcha Clip. Fig 6

Continued on next page.





EasyUp Pole



Variable Point Anchor

Instructions for Hanging

Step 6

Insert top end of EasyUp pole into slot on either side of anchor. Align anchor to ceiling grid and attach. Fig. 7

Step 7

Swing pole parallel to graphic to release pole. Fig. 8

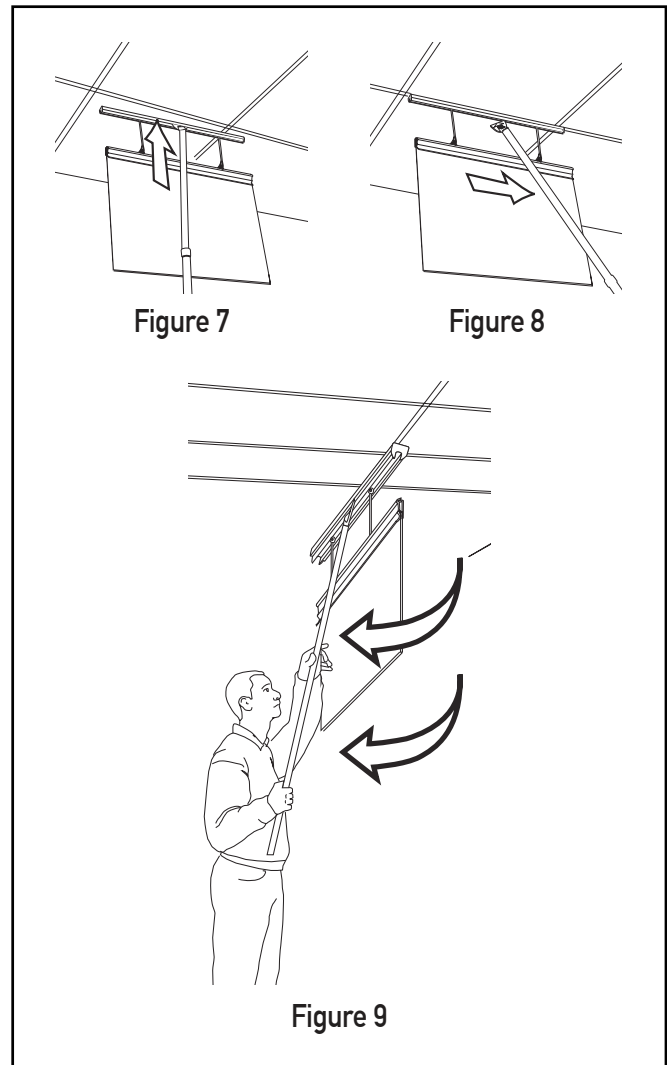
Instructions to Remove Graphic

Step 8

Insert end of EasyUp pole into wide slot on the back toward the middle of the anchor. Swivel pole away from graphic & towards yourself to detach from ceiling. Fig. 7 & 8

Step 9

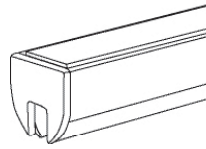
Slide graphic out side of anchor. Fig. 9
Repeat steps 1-4 to hang different graphic.



Installation Guidelines



MultiClip



Variable Point
Anchor



EasyUp Pole

Instructions for Hanging

Step 1

Squeeze sides of one MultiClip together. Align the rail of the MultiClip with the channel of the Variable Point Anchor. Fig. 1

Step 2

Slide MultiClip into channel of anchor. Fig. 2
For best results, place 1/3 of the way in from each end. Repeat Steps 1 and 2 for second MultiClip.

Step 3

Insert top end of EasyUp pole into slot on either side of anchor. Align anchor to ceiling grid and attach. Fig. 3

Step 4

Swing pole parallel to graphic to release pole. Fig. 4

Instructions to Remove Graphic

Step 5

Insert end of EasyUp pole into wide slot on the back toward the middle of the anchor. Swivel pole away from graphic & towards yourself to detach from ceiling. Fig. 3 & 4

Step 6

Slide graphic out side of anchor. Fig. 5
Repeat steps 1-4 to hang different graphic.

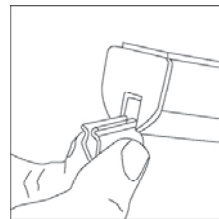


Figure 1

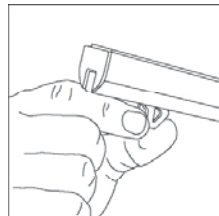


Figure 2

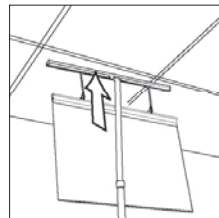


Figure 3

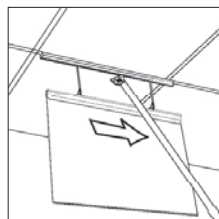


Figure 4

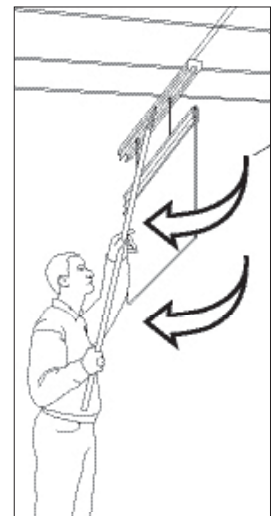


Figure 5